



SPM-D10/YB

Three Phase Synchronizer

APPLICATIONS

The SPM-D10/YB is a microprocessor-based synchronizer designed for use on three phase AC generators equipped with Woodward or other compatible speed controls and automatic voltage regulators. The SPM-D10/YB synchronizer provides automatic frequency and voltage matching using discrete output bias signals.

DESCRIPTION

Synchronizing

- Slip frequency synchronization with voltage matching
- Three-phase sensing of generator and bus (adjustable measurement three-phase or two-phase)
- Synchro-check functions possible
- Synchronization time monitoring
- A discrete input can utilize an adjustable closure relay for slip synchronizing or dead bus closure

Isolated operation

- Frequency control
- Voltage control

Dead bus operation

- Closing of CB on demand
- Dead bus check adjustable for any application
 - a) System 1 live – system 2 dead
 - b) System 1 dead – system 2 live
 - c) System 1 dead – system 2 dead

FURTHER SPM-D SYNCHRONIZERS

- The SPM-D10 Series provides two-phase generator and bus measurement refer to product specifications 37297 for more information
- The SPM-D11 Series provides load/var sharing refer to product specifications 37292 for more information

DESCRIPTION

Control outputs

- Discrete raise/lower for speed
- Discrete raise/lower for voltage

Operating Features

- Two-line Liquid Crystal display for operation and alarm indication
- Synchroscope
- Indication of control activity and breaker state
- Configuration directly
- English or German language adjustable
- Blocking of configuration by digital input
- Check of parameter change by software sealing function

- Synchronization for one circuit breaker
- Frequency and voltage matching
- Discrete raise/lower control output
- Digital display of generator and bus values
- Front panel configurable¹⁾
- Wide range power supply available
- CE marked
- UL/cUL Listed

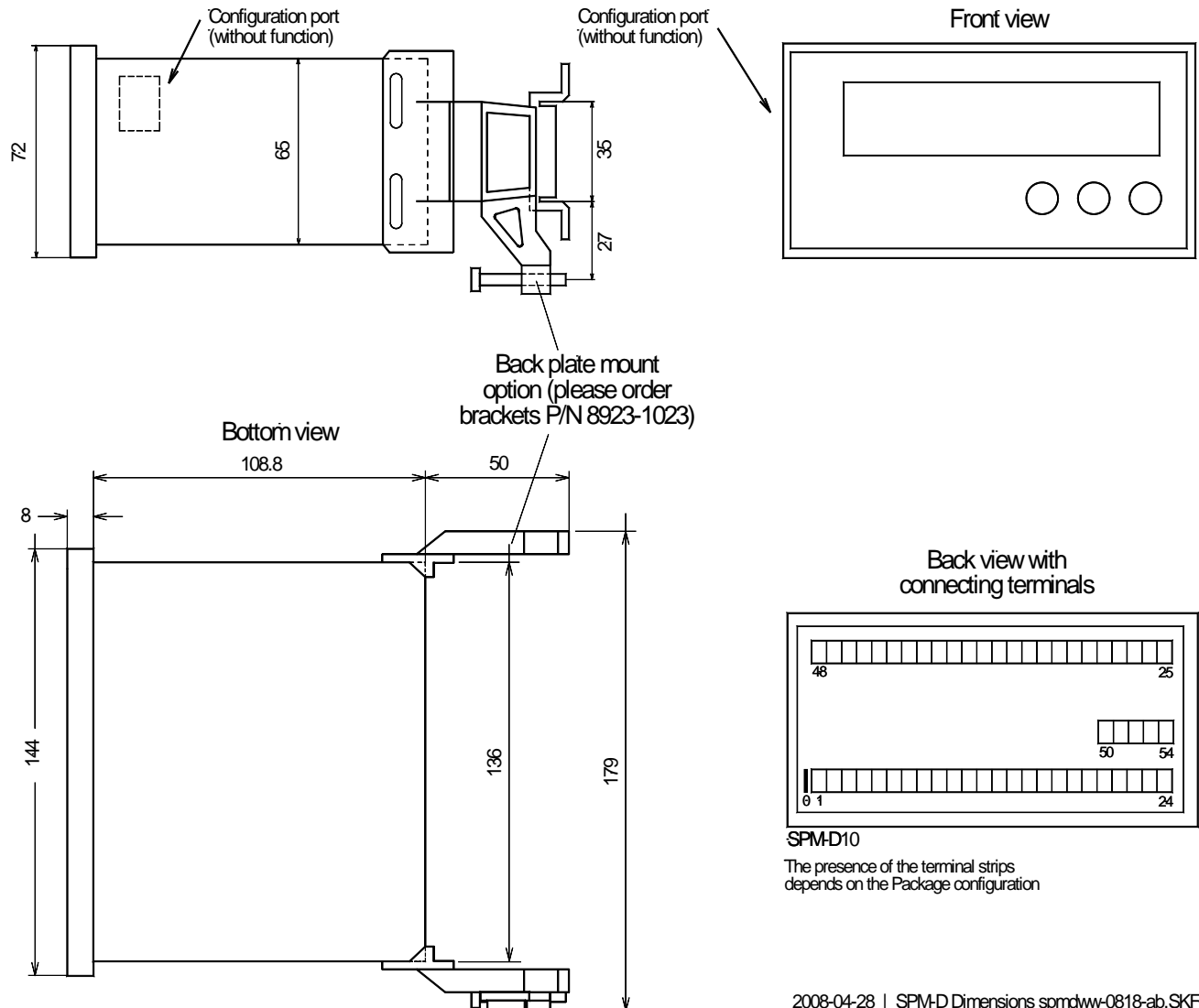
¹⁾ Remote configuration via PC is not available

SPECIFICATIONS (for more see specific manuals)

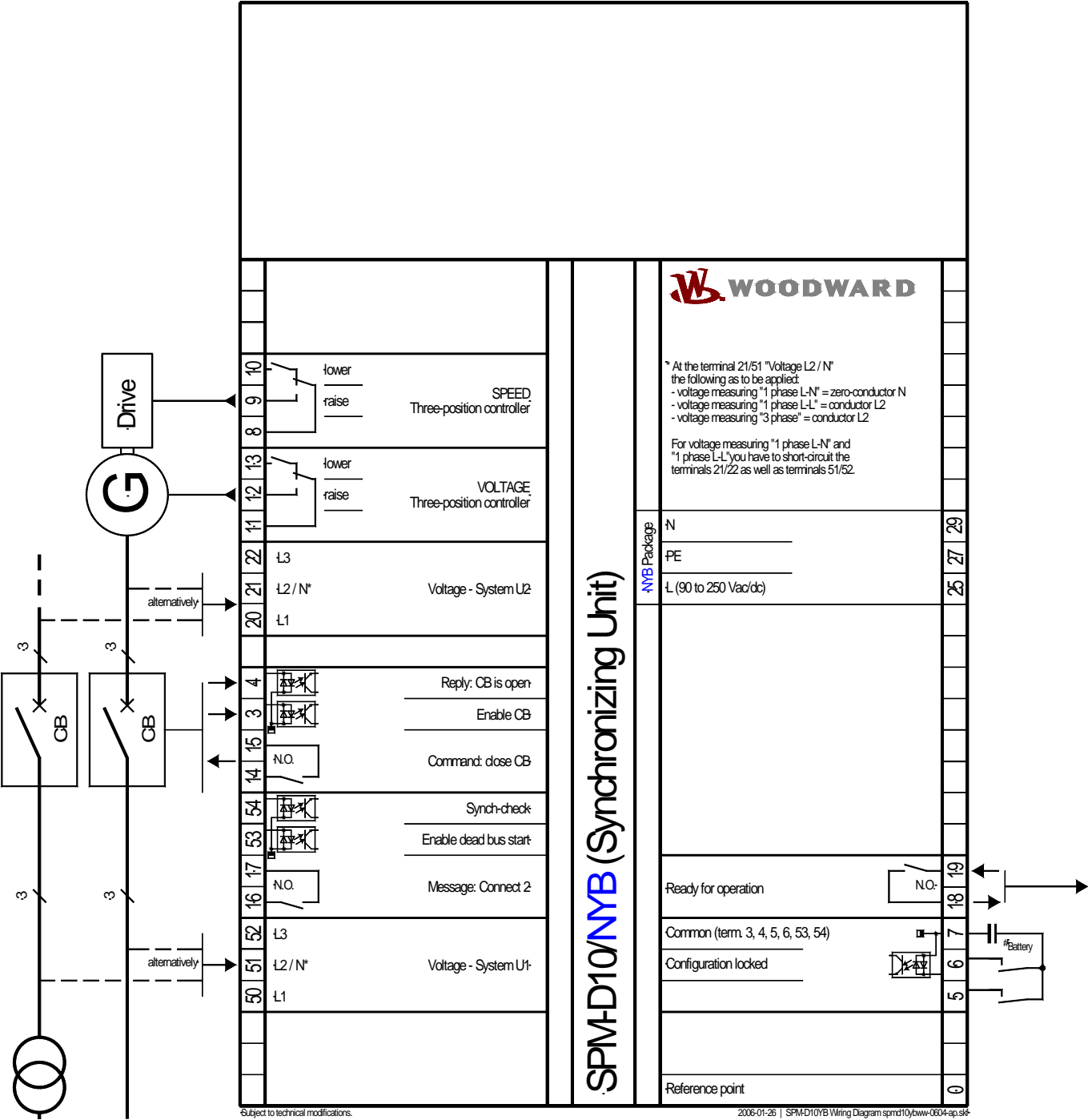
Accuracy	Class 1
Power supply	[YB Package] 24 Vdc (+/-25 %)
	[NYB Package] 90 to 250 Vac/dc
Intrinsic consumption	max. 10 W
Ambient temperature	-20 to 70 °C
	[NYB Package] -20 to 60 °C
Ambient humidity	95 %, non-condensing
Voltage	Rated Δ/D : [1] 66/115 Vac or [4] 230/400 Vac
	Maximum value (V_{max}): [1] 150 Vac or [4] 300 Vac
	Rated voltage $V_{ph-ground}$: [1] 150 Vac or [4] 300 Vac
	Rated surge voltage: [1] 2.5 kV or [4] 4.0 kV
Measuring frequency	40 to 70 Hz
Linear measuring range up to	$1.3 \times V_{rated}$
Input resistance	[1] 0.21 MW, [4] 0.696 MW
Max. power consumption per path	< 0.15 W
Discrete inputs	isolated
Input range	max. 250 Vac or dc
Input resistance	approx. 68 kW

Relay outputs	isolated
Contact material	AgCdO
Load (GP)	2.00 Aac@250 Vac
	2.00 Adc@24 Vdc / 0.36 Adc@125 Vdc / 0.18 Adc@250 Vdc
Pilot duty (PD)	1.00 Adc@24 Vdc / 0.22 Adc@125 Vdc / 0.10 Adc@250 Vdc
Housing	Type APRANORM DIN 43 700
Dimensions	144x72x122 mm
Front cutout	138[+1.0]x67[+0.7] mm
Connection	screw/plug terminals depending on connector 1.5 mm ² or 2.5 mm ²
Front	insulating surface
Protection system	with correct installation
	Front
	(sealed IP54; gasket kit = P/N 8923-1037)
	Back
	IP21
Weight	approx. 800 g
Disturbance test (CE)	tested according to applicable EN guidelines
Listings	UL/cUL listed (voltages up to 300 Vac)

DIMENSIONS



WIRING DIAGRAM



International
Woodward
PO Box 1519
Fort Collins CO, USA
80522-1519
1000 East Drake Road
Fort Collins CO 80525
Ph: +1 (970) 498-3634
Fax: +1 (970) 498-3058
email:
SalesPGD_NAandCA@woodward.com

Europe
Woodward GmbH
Handwerkstrasse 29
70565 Stuttgart, Germany
Ph: +49 (0) 711 789 54-510
Fax: +49 (0) 711 789 54-101
email:
SalesPGD_EMEA@woodward.com

Distributors & Service
Woodward has an international network of distributors and service facilities. For your nearest representative, call the Fort Collins plant or see the Worldwide Directory on our website.

www.woodward.com/power

For more information contact:

FEATURES OVERVIEW

SPM-D10YB Synchronizer #1	SPM-D10/YB	SPM D10/NYB
Measuring/Display		
Generator voltage, 3/2 phase	Ü	Ü
Busbar voltage, 3/2 phase	Ü	Ü
Control		
Breaker	1	1
Synchronization, 3/2 phase	Ü	Ü
Enhanced dead bus start functionality #2	Ü	Ü
Isolated operation	Ü	Ü
Controller		
Discrete raise/lower: speed	Ü	Ü
Discrete raise/lower: voltage	Ü	Ü
Listings/Approvals		
CE marked	Ü	Ü
UL/cUL listed	Ü	Ü
Power supply		
24 Vdc	Ü	
Wide range 90 to 250 Vac/dc		Ü
Accessories		
Configuration via PC #3		
Manuals		
English	37134	37134
German	GR37134	GR37134
Part numbers P/N		
Measuring inputs 100 Vac	5448-906	8440-1434
Measuring inputs 400 Vac #4	8440-1021	8440-1435

#1 Information about all other SPM-D10 models can be found in the separate product specs 37297

#2 Black start (closing to de-energized second side of a breaker for following conditions):

- dead system 1 - live system 2
- live system 1 - dead system 2
- dead system 1 - dead system 2

#3 Remote configuration via PC is not available

#4 All units with 400V measuring inputs can also be used for 100V system voltage

Subject to technical modifications.

This document is distributed for informational purposes only. It is not to be construed as creating or becoming part of any Woodward Governor Company contractual or warranty obligation unless expressly stated in a written sales contract.

We appreciate your comments about the content of our publications. Please send comments including the document number below to stgt-doc@woodward.com

© Woodward

All Rights Reserved

37298D - 2012/6/Stuttgart